

NAUTRONIC SCOREBOARD SYSTEM

Danmarksvej 1
DK-8660 Skanderborg
Tel: +45 86 51 11 66
scoreboards@nautronic.com
nautronic.com

The entire guide is subject to alterations

NAUTRONIC SCOREBOARD SYSTEM

NAUCON-40

Multitimer

 *User Guide*

 *Brugervejledning*

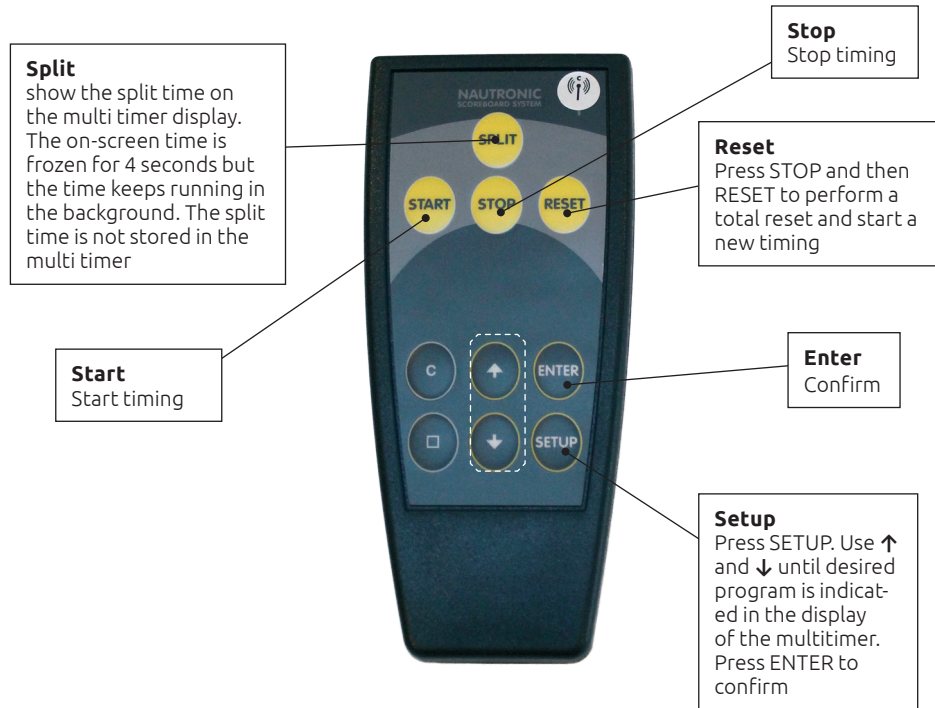




Getting to know your Naucon-40

The remote

The remote control is supplied by 2 pcs. standard AA alkaline batteries, LR6, 1500 mAh. Battery lifetime is 3 years in average or 80.000 pressures to the remote. The remote control has a range of approx. 100 m in direct and free line (no obstacles or interferences).



Battery test

1. Dismount battery cover
2. Place the remote as shown in the picture
3. Press any button. If red light flashes batteries are fine



Available programs

How to select a program

Programs are selected by operating the grey buttons on the remote control. Press **SETUP**. Use ↑ and ↓ until desired program is indicated in the display of the multimer. Press **ENTER** to confirm

Program 1: Clock functions

Clock:	Shows "Time of day"
Clock setup:	Press ↑ two times. The first two digits start flashing and the following must be entered: HH/MM/SS (Hours, minutes, seconds) Press ↑ or ↓ to select the correct time. Press ENTER to confirm and continue until all digits are entered.
Date setup:	Press ↓ two times. The first two digits start flashing and the following must be entered: DD/MM/YY (Date, month, year) Press ↑ or ↓ to select the correct date. Press ENTER to confirm and continue until all digits are entered.
Count down:	Can be set to count down from a given time or date. Press SPLIT two times. The display now shows 1 OFF . Press ↑ or ↓ until 1 ON is shown and press ENTER . Now the first two digits will flash and the following must be entered: DD/MM/YY and HH/MM Press ↑ or ↓ to select the correct time and date. Press ENTER and continue until all digits are entered. The multimer is now set to count down to the selected time and date.
Turn OFF Count down	Press SPLIT two times. Press ↑ or ↓ until 1 OFF is displayed and press ENTER



Program 2: Timer functions

Timer program 1-3:	Three independent timer programs can be set to 1. Show rounds with break time, 2. Count down timer and 3. Stop watch with milli seconds.
Select timer program:	Press ↓ two times. Press ↑ or ↓ to navigate through the timer programs 1-3. Press ENTER to select the desired program.
Timer	Timer can be set to count up or down starting from – or going up to a certain time.
Edit time	Press ↑ two times. The first digit starts flashing. Press ↑ or ↓ to edit the time and press ENTER to continue with the next digit.
Enter setup	Press ENTER to enter setup. Navigate through the menu by pressing SETUP multiple times. To switch functions ON and OFF press ↑ or ↓ .
Timer count-mode	Set the timer to count up or down: 1 UP sets the timer to count UP 1 DO sets the timer to count DOWN
Horn	Can be set to sound when the time runs out (only if horn is installed). Set the horn to sound when the time runs out: 2 OFF turns the horn off 2 ON turns the horn on
Milli seconds	Can be shown in the two last digits of the display Turn milli seconds on and off: 3 OFF turns milli seconds OFF 3 ON turns milli seconds ON
Rounds	Can be set to count up or down Turn rounds on and off: 4 OFF turns rounds OFF/Deaktiverer runder 4 ON turns rounds ON/Aktiverer runder
Break	A 1 minute break can be set between each Round or Time. Break time cannot be edited. Turn on to insert a 1 minute break between rounds: 5 OFF turns break OFF 5 ON turns break ON



Extra timer functions

Only possible when NGIO and a cabled handle is installed

Start time: Starts time

Stop time: Stops time

Split time: Shows split time

Reset time: Resets time

“Press and hold” timer: Starts timer by pressing and holding the button. Stops timer by releasing the button.

Program 3: Counter functions

Counter	Can count up and down by pressing ↑ and ↓
Reset counter	Press RESET to start over

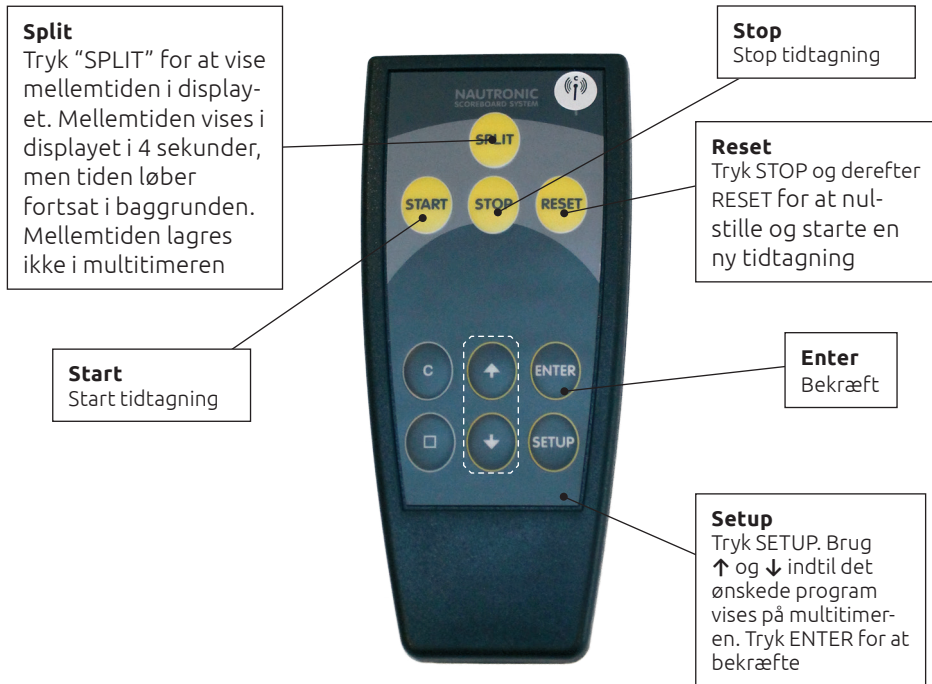




Sådan virker din Naucon-40

Fjernbetjeningen

Fjernbetjeningen bruger 2 stk. standard AA alkaline batterier, LR6, 1500 mAh. Batteriernes levetid vil typisk være 3 år ved normal brug eller 80.000 tryk. Fjernbetjeningen har en rækkevidde på ca. 100 m i direkte uhindret linje (ingen forhindringer eller forstyrrelser).



Batteritest

1. Tag batteridækslet af
2. Placer fjernbetjeningen som vist på billedet.
3. Tryk på en vilkårlig knap. Hvis rødt lys blinker er batterierne i orden.



Tilgængelige programmer

Sådan vælger du et program

Programmerne vælges ved at betjene de grå taster på fjernbetjeningen. Tryk **SETUP**. Brug ↑ og ↓ indtil det ønskede program vises på multimeren. Tryk **ENTER** for at bekræfte.

Program 1: Urfunktioner

Ur:	Viser ur
Indstil ur:	Tryk ↑ to gange. De første to cifre blinker og det følgende skal indstilles: HH/MM/SS (Timer, minutter, sekunder) Tryk ↑ eller ↓ for at vælge korrekt tid. Tryk ENTER for at bekræfte og fortsæt indtil alle cifre er indstillet.
Indstil dato:	Tryk ↓ to gange. De første to cifre blinker og det følgende skal indstilles: DD/MM/YY (Dag, måned, år) Tryk ↑ eller ↓ for at vælge korrekt dato. Tryk ENTER for at bekræfte og fortsæt indtil alle cifre er indstillet.
Nedtælling:	Kan indstilles til nedtælling fra et bestemt tidspunkt eller dato. Tryk SPLIT to gange. Displayet viser nu 1 OFF . Tryk ↑ eller ↓ indtil displayet viser 1 ON og tryk derefter ENTER . Nu blinker de første to cifre og det følgende skal indstilles: DD/MM/YY og HH/MM Tryk ↑ eller ↓ for at vælge korrekt tid og dato. Tryk ENTER og fortsæt indtil alle cifre er indstillet. Multimeren er nu indstillet til at tælle ned til den valgte dato og tid.
Stop nedtælling	Tryk SPLIT to gange. Tryk ↑ eller ↓ indtil 1 OFF vises i displayet og tryk ENTER



Program 2: Tidtagningsfunktioner

Tidtagningsprogram 1-3:	Tre forskellige tidtagningsprogrammer kan indstilles: 1. Runder med pause 2. Nedtælling og 3. Stopur med milisekunder
Vælg tidtagningsfunktion:	Tryk ↓ to gange. Tryk ↑ eller ↓ for at navigere i tidtagningsfunktionsmenuen 1-3. Tryk ENTER for at vælge den ønskede funktion.
Tidtagning:	Kan indstilles til at tælle op til eller ned fra en bestemt tid.
Rediger tid:	Tryk ↑ to gange. Det første ciffer blinker. Tryk ↑ eller ↓ for at redigere tiden og tryk ENTER for at gå videre til næste ciffer.
Gå til indstillinger	Tryk ENTER for at gå til indstillinger. Gå gennem menuen ved at trykke flere gange på SETUP . For at aktivere eller deaktivere funktioner trykkes ↑ eller ↓ .
Tidtagning tællemodus	Sæt tidtagning til at tælle op eller ned: 1 UP tællert OP 1 DO tæller NED
Horn	Hornet kan indstilles til at lyde når tiden løber ud (kun hvis horn er installeret) Indstil hornet til at lyde når tiden løber ud: 2 OFF hornet er deaktiveret 2 ON hornet er aktiveret
Millisekunder	Vises i de sidste to cifre i displayet. Aktiver eller deaktivér milisekunder: 3 OFF Millisekunder deaktiveret 3 ON Millisekunder aktiveret
Runder	Kan indstilles til at tælle op eller ned. Aktiver eller deaktivér runder: 4 OFF Deaktiverer runder 4 ON Aktiverer runder
Pause	En pause på 1 minut kan indstilles mellem hver runde eller tidtagning. Pausetiden kan ikke ændres. Aktiver for at indsætte 1 minuts pause mellem runder: 5 OFF Deaktiver pause 5 ON Aktiver pause



Ekstra tidtagningsfunktioner

Kun muligt når NGIO og kablet fjernbetjening er installeret

Start tidtagning: Starter tidtagning
Stop tidtagning: Stopper tidtagning
Mellemtid: Viser mellemtid
Nulstil tidtagning: Nulstiller tidtagning
“Tryk og hold nede” tidtagning: Starter tidtagning ved at trykke og holde knappen nede. Stopper tidtagning når knappen slippes.

Program 3: Tællefunktioner

Tællefunktion:	Tæller op og ned ved tryk på ↑ og ↓
Nulstil tæller	Tryk RESET for at nulstille tæller





Troubleshooting

D1, Main: If D1 light is OFF: Check Fuse F3

D2, 230VAC LED: If D2 light is OFF: Check main power connection.

D3, 12 VDC Horn: If D3 light is OFF: Check fuse F1.

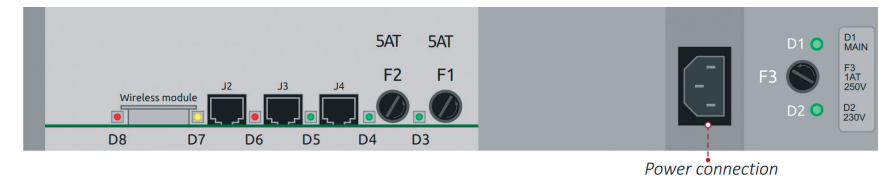
D4, 24VDC Digit/Ciffer: If D4 light is OFF: Check fuse F2.

D5, 24VDC for J2, J3 and J4: If D5 light is OFF: Remove all equipment connected to J2, J3 and J4.
If D5 light turns on, there might be a short circuit in the equipment connected to J2, J3 and J4

D6, Data communication: D6 flashes when a button is pressed in the NAUCON-40. If not the NAUCON-40 or NGMCB controller could be faulty.

D7, Internal operation: If D7 light is OFF: Internal units in the scoreboard might be damaged.

D8, Wireless communication: D6 flashes when a button is pressed in the NAUCON-40. If not the NAUCON-40 or NGMCB controller could be faulty.



Seen from the bottom of the Scoreboard.

For more information on
troubleshooting and service visit
nautronic.com/spareparts/naucon-1000-service